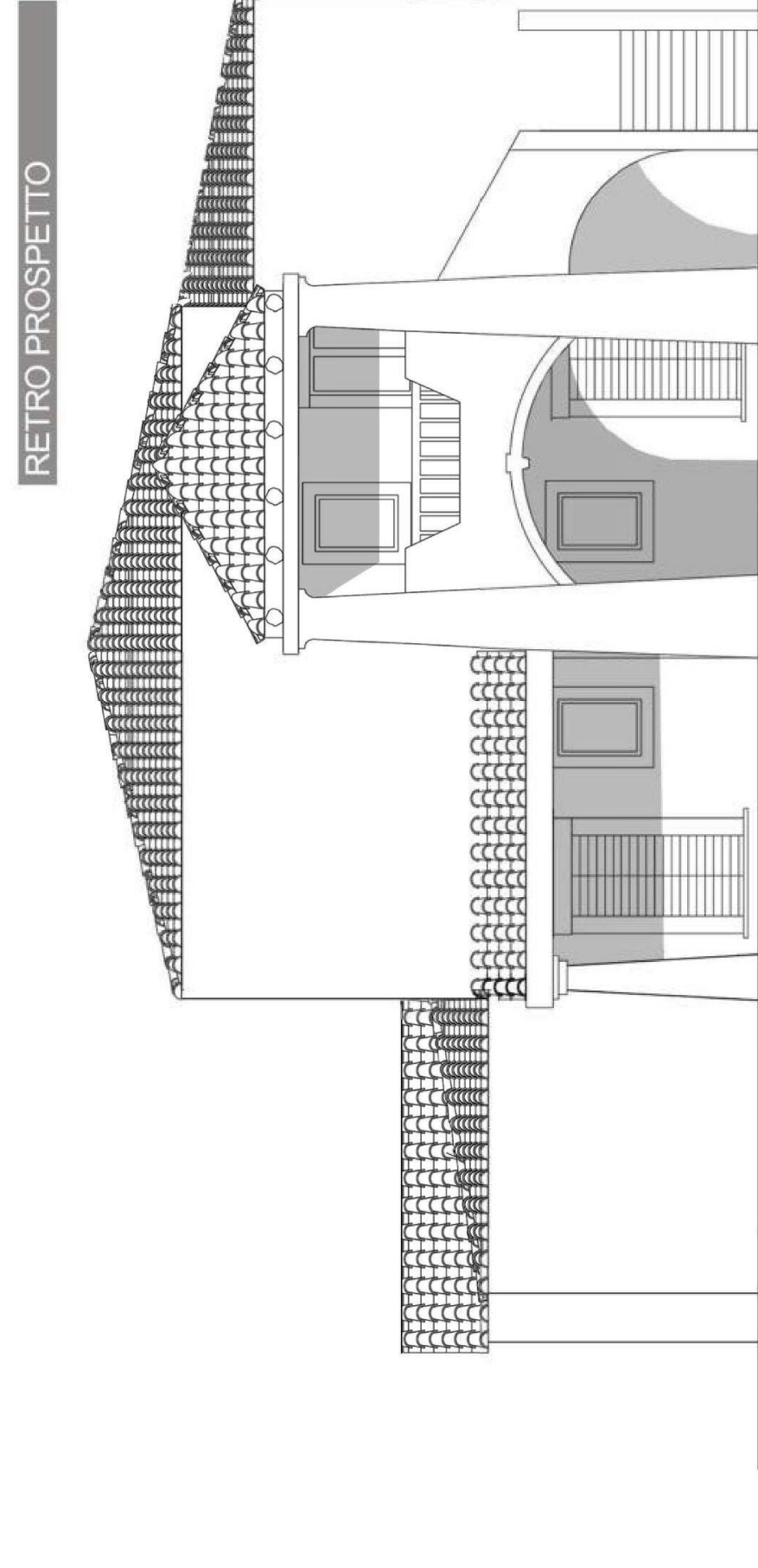
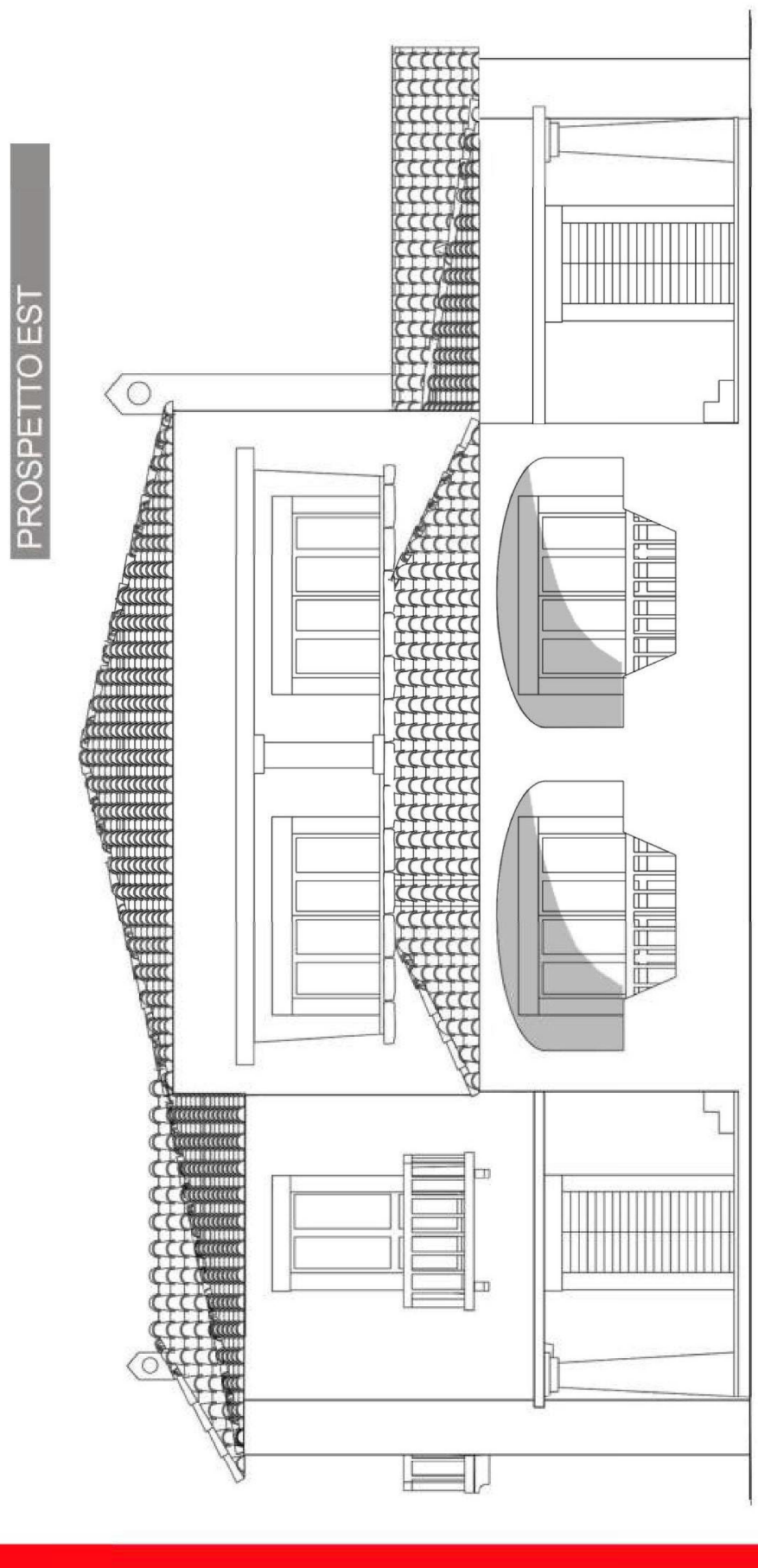
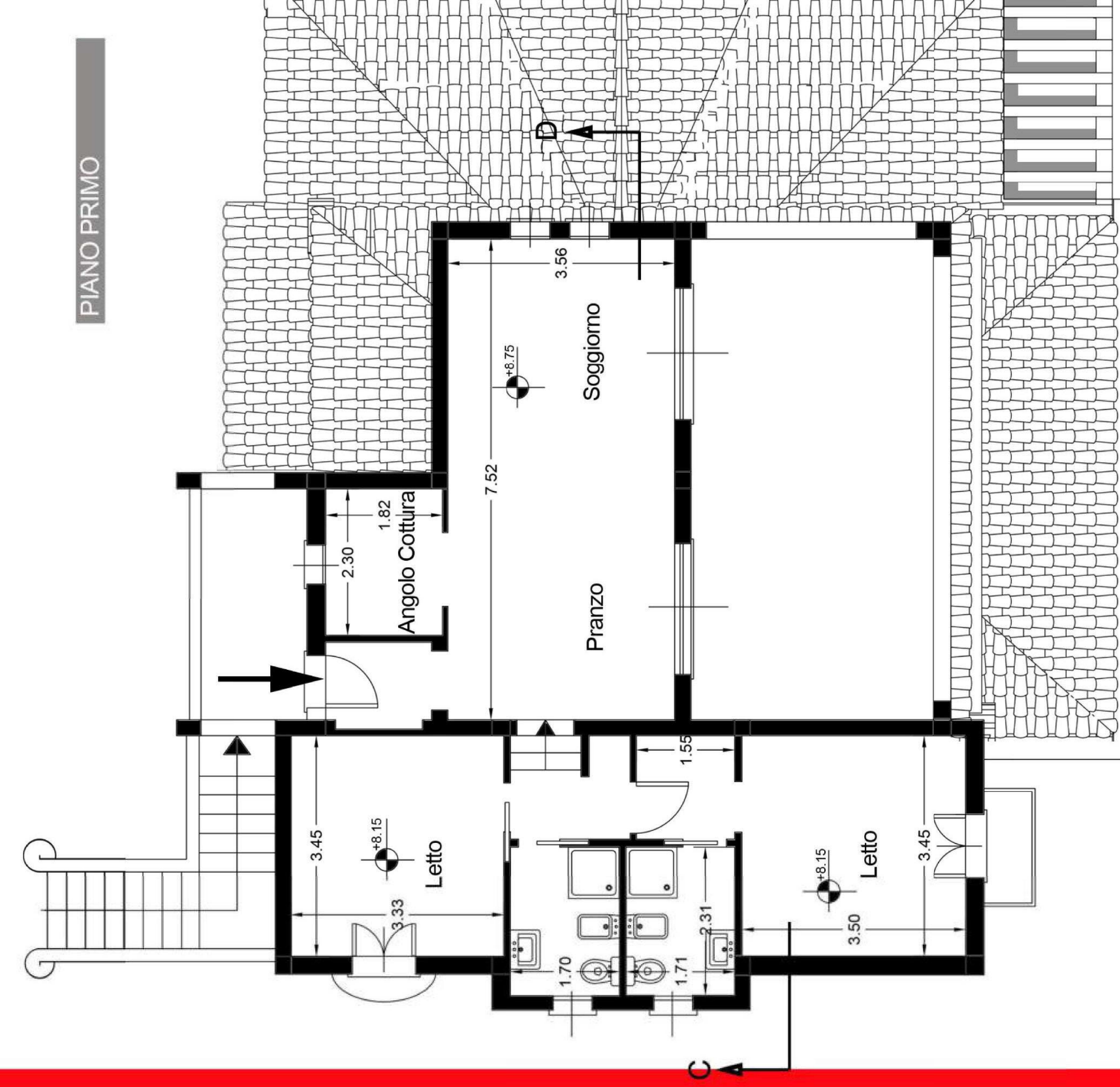
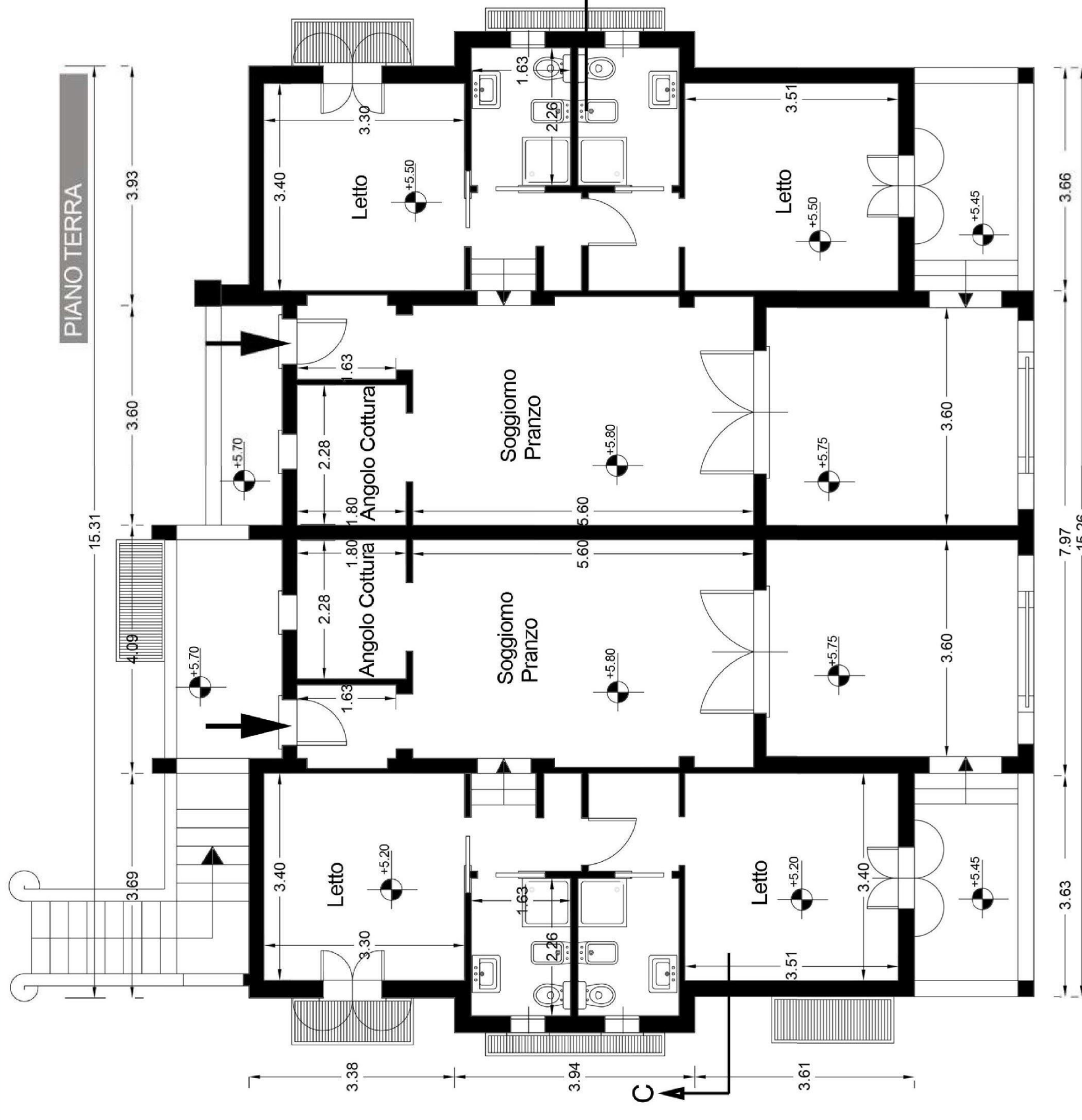
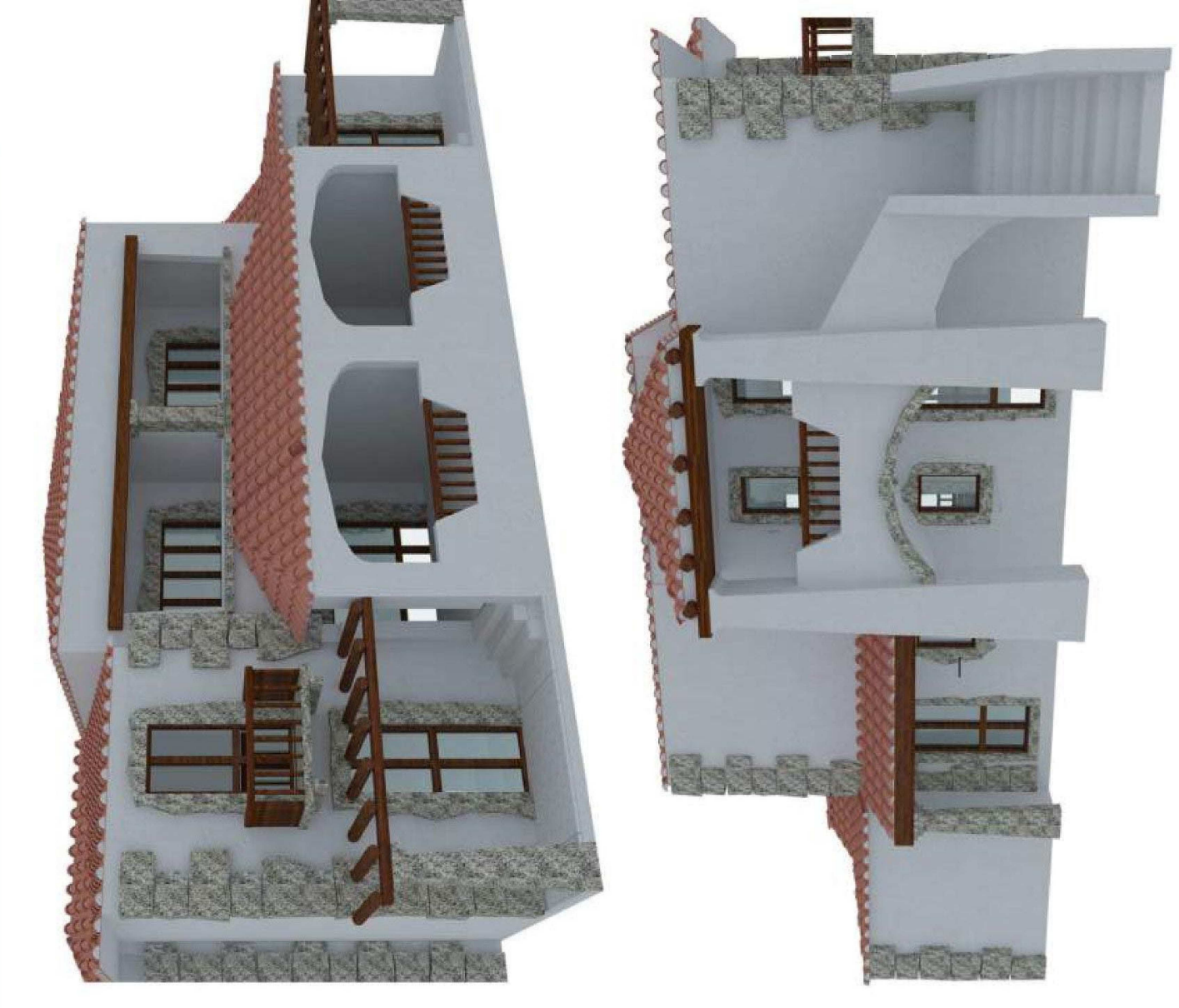
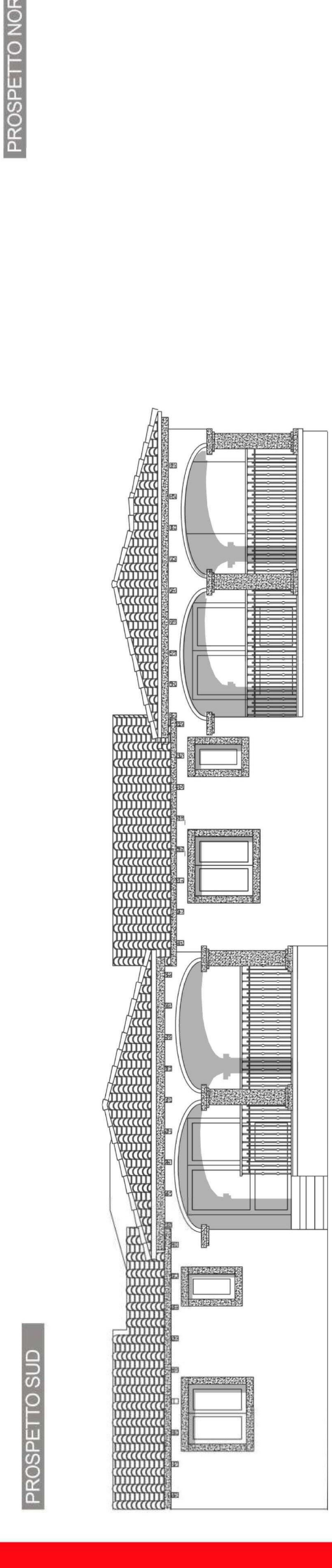
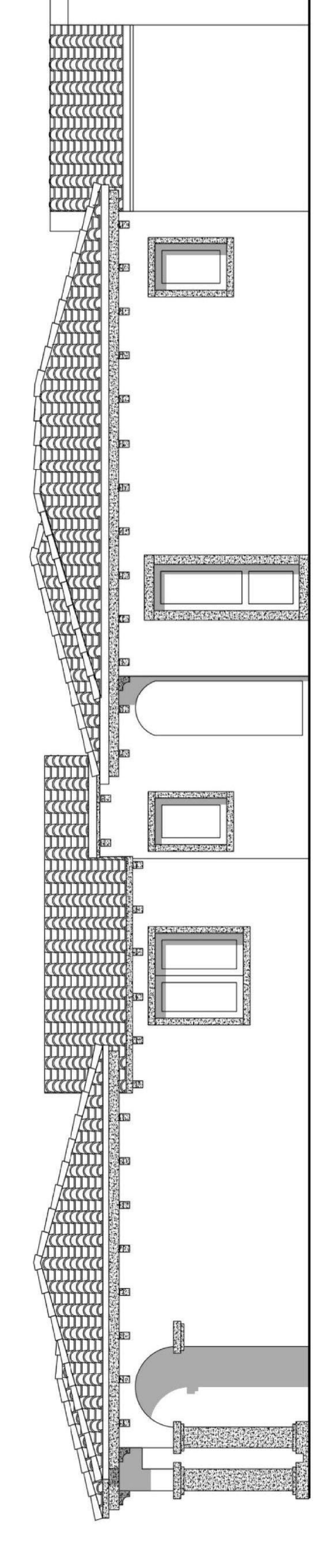
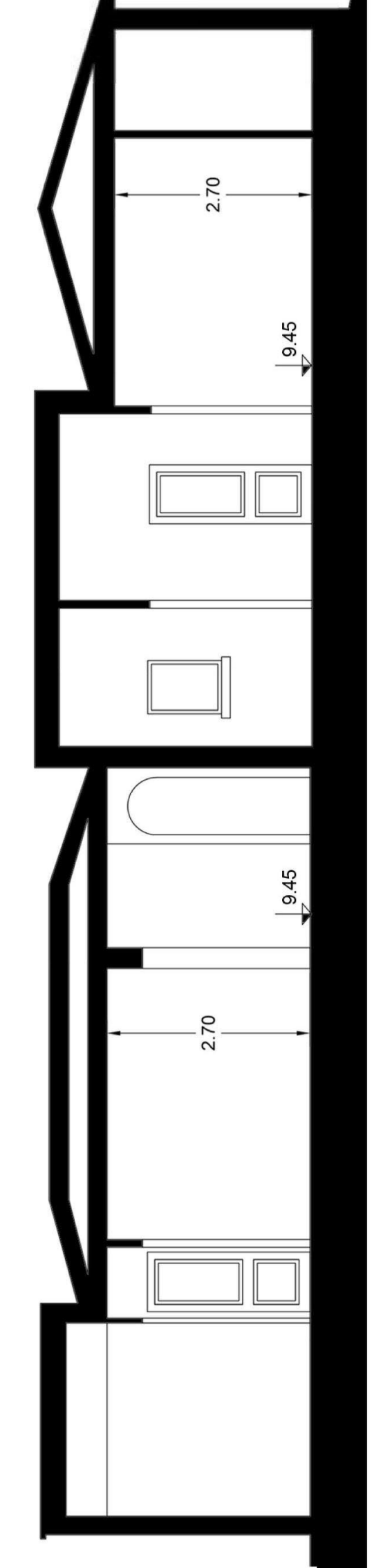
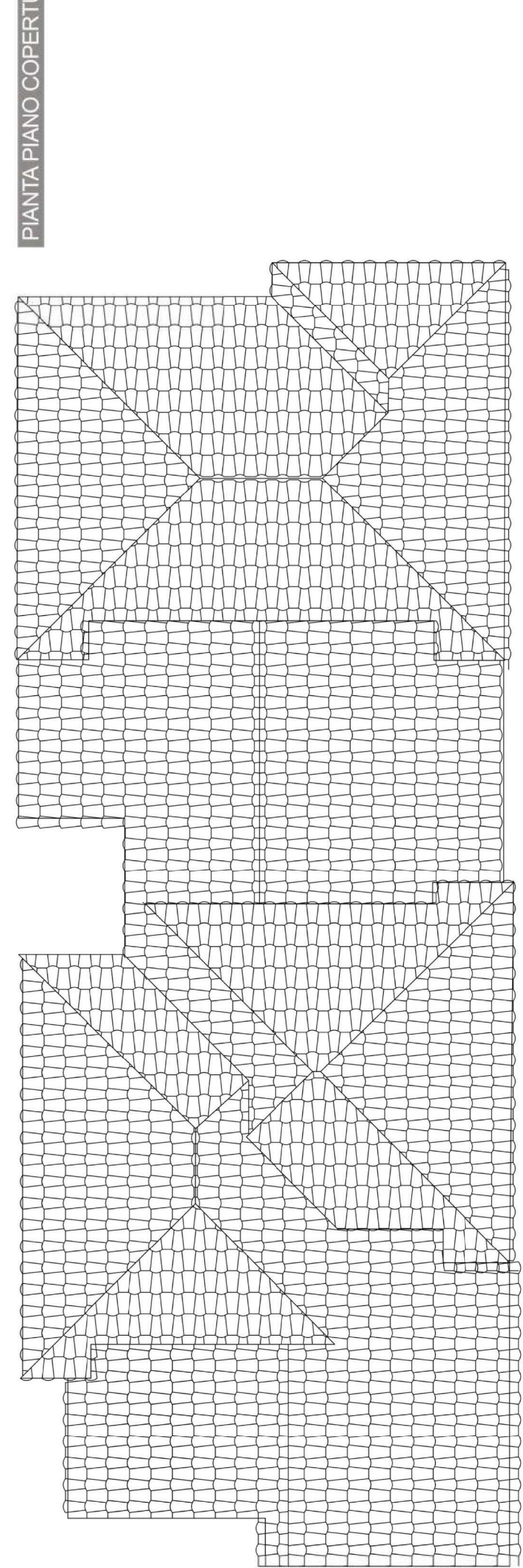
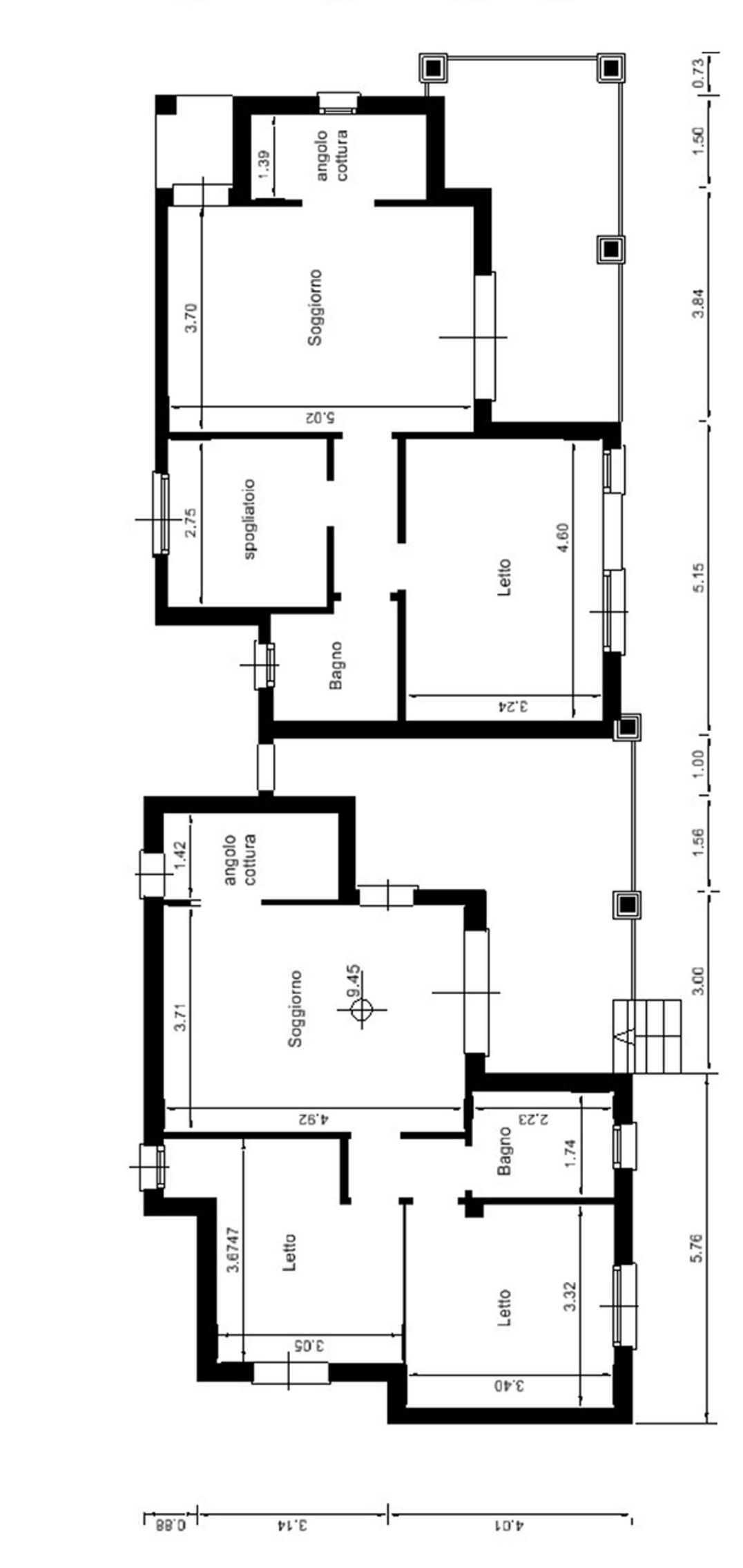


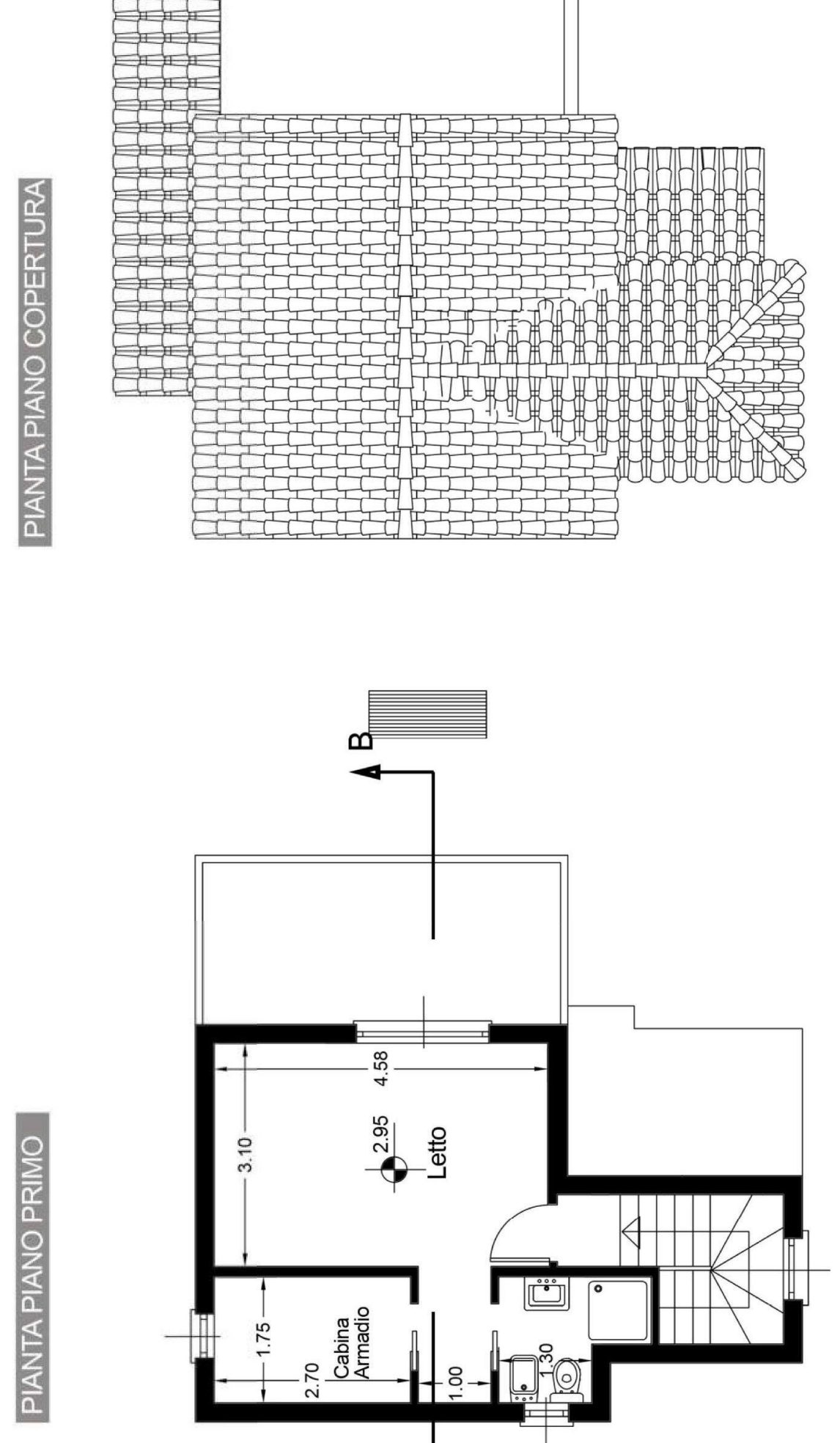
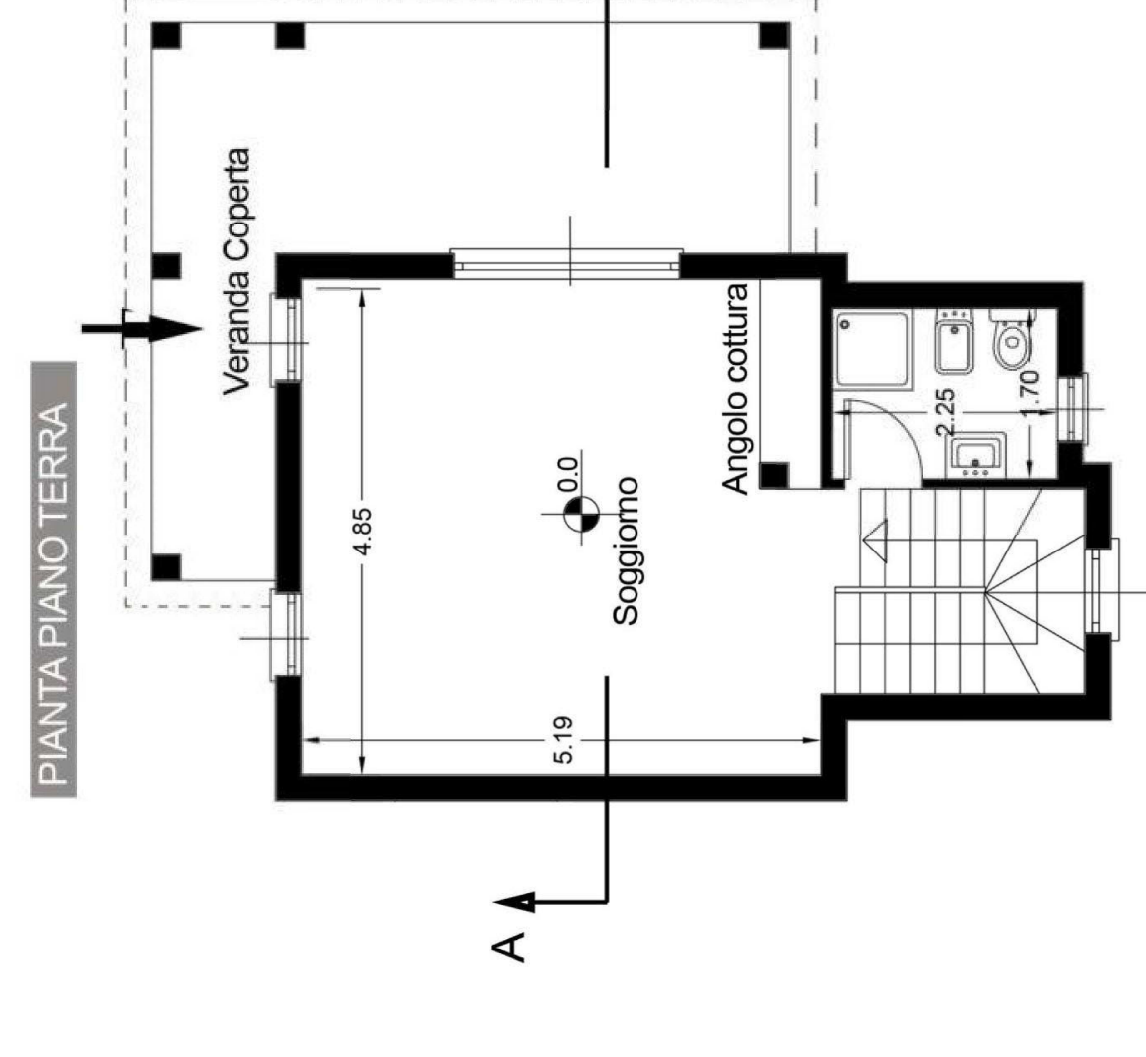
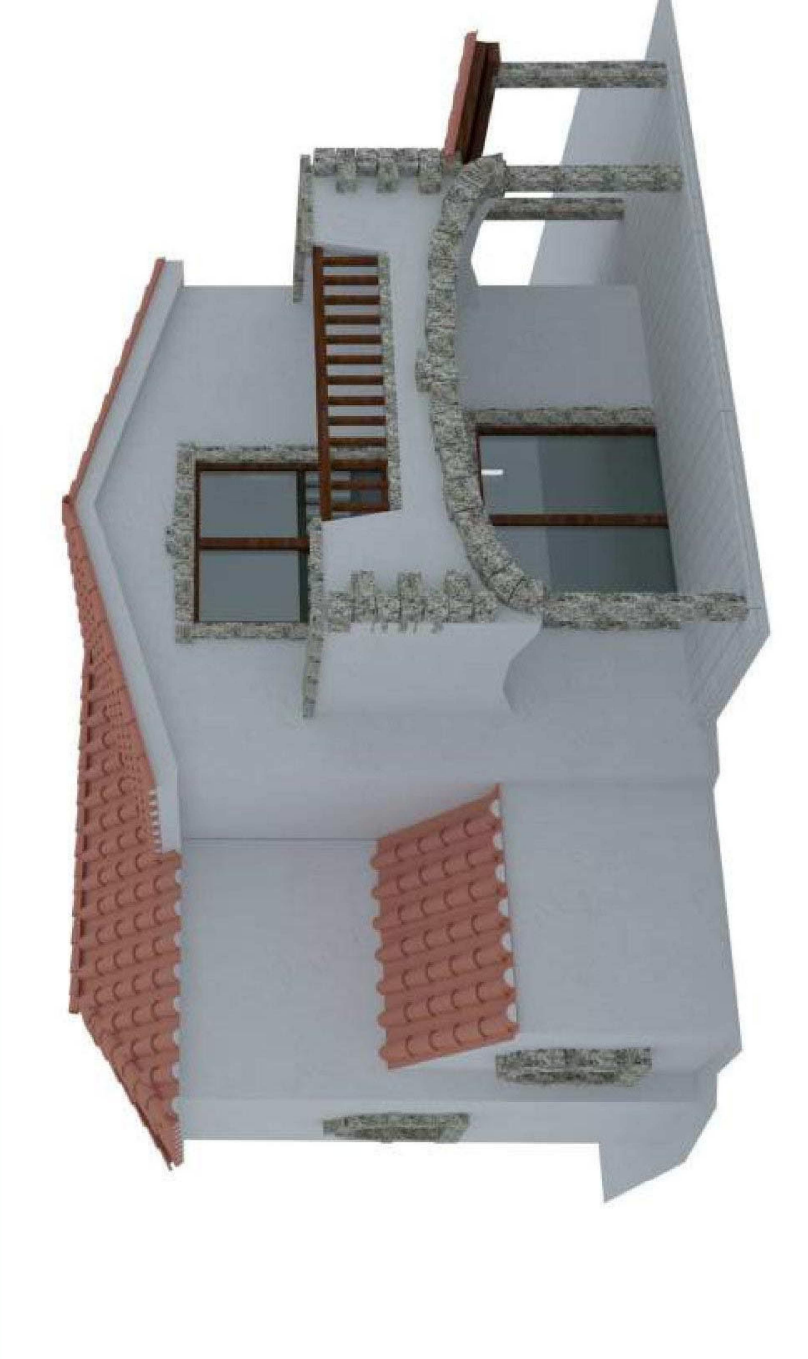
Tipologia A



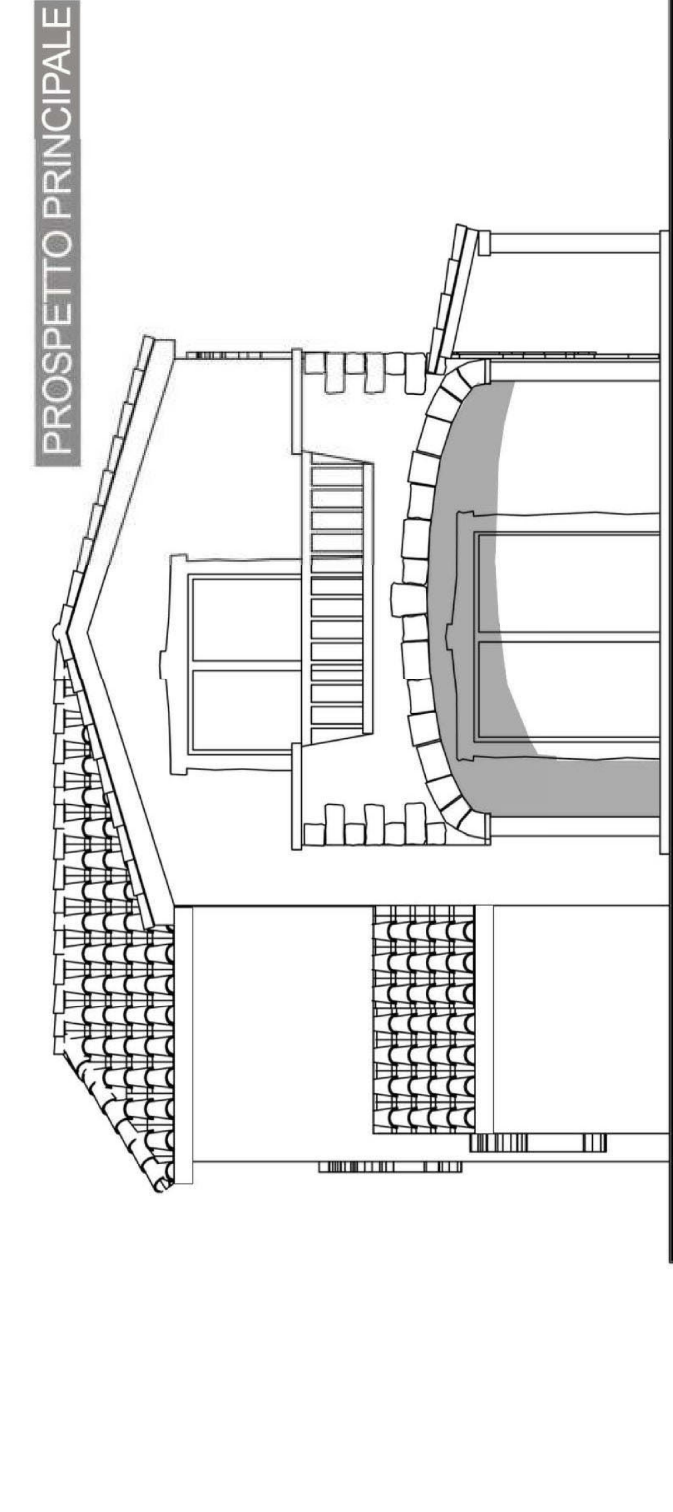
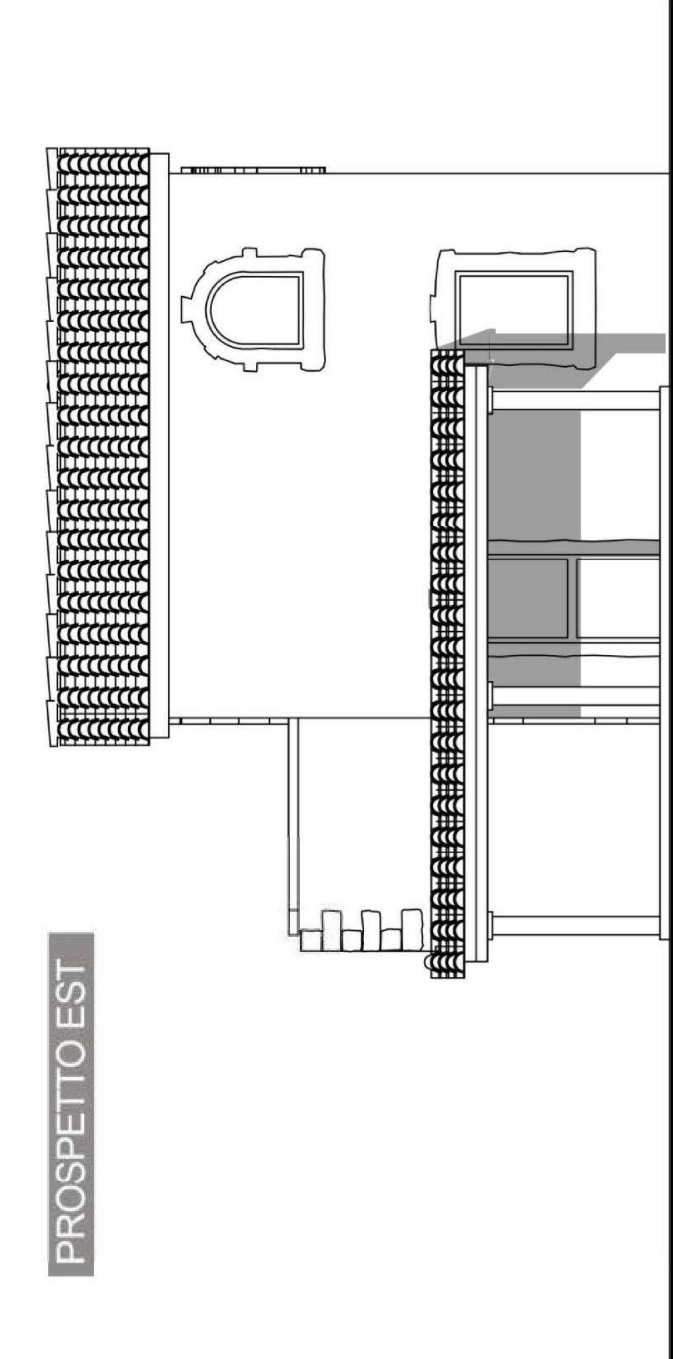
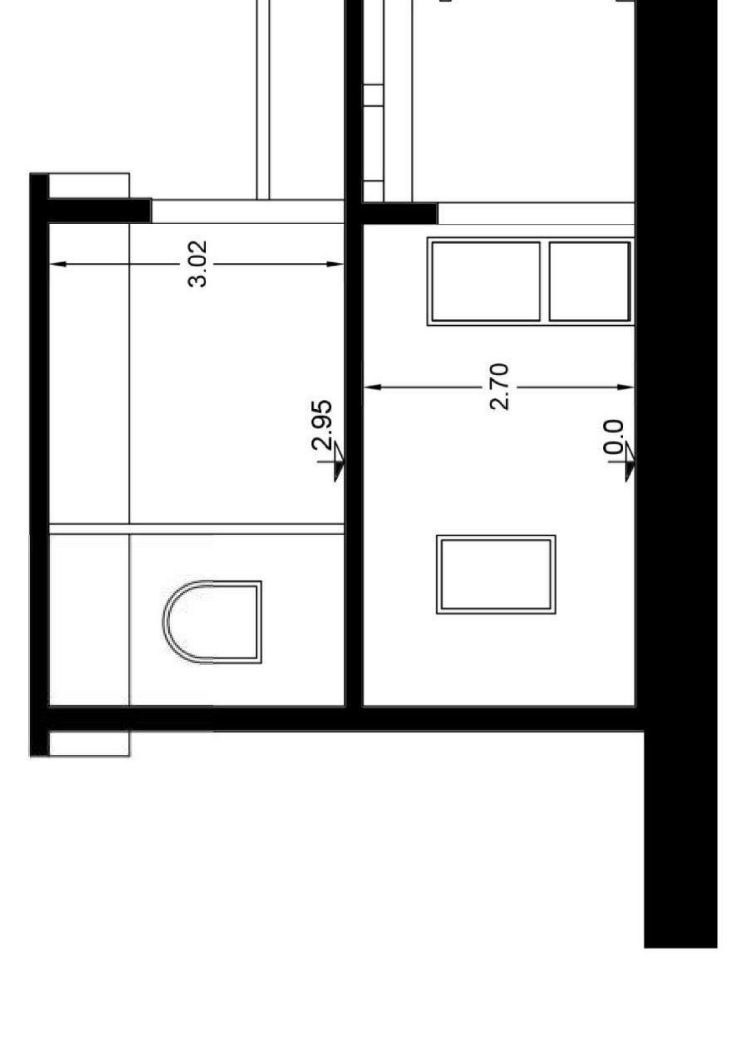
Tipologia C




Tipologia D



SEZIONE A-B





COMUNE di **OLBIA**

Provincia di Olbia - Tempio

VARIANTE

AL PIANO DI RISANAMENTO URBANISTICO
EX L.R. N°23/85
DELLA ZONA N° 16 - FRAZIONE DI
PITTULONGU

APPROVAZIONE DEFINITIVA

ABACO DELLE TIPOLOGIE EDILIZIE

UFF. TECNICO - SETT. URBANISTICA
Ing. Cosantino Azzena
Ing. Antonio G. Zanca
Geom. Antonio Merongiu
Geom. Giovanni Testi Roggia
Geom. Salvatore Spiano
Geom. Lucia Valentini Muzzi
Ing. Valentinia Secchi

IL SINDACO
On. Giovanni M.E. Giovannelli

L'ASSESSORE
Avv. Carlo Careddu

IL DIRIGENTE
Ing. Cosantino Azzena

IL SEGRETARIO
Dott. ssa Stefania Cinzia Glua

COLLABORATORI ESTERNI
Arch. Luigi Pirasino

Aprile 2015 **Elaborato G2**

Tipologia B

